

# **Precinct and District Boundary Advisory Committee**

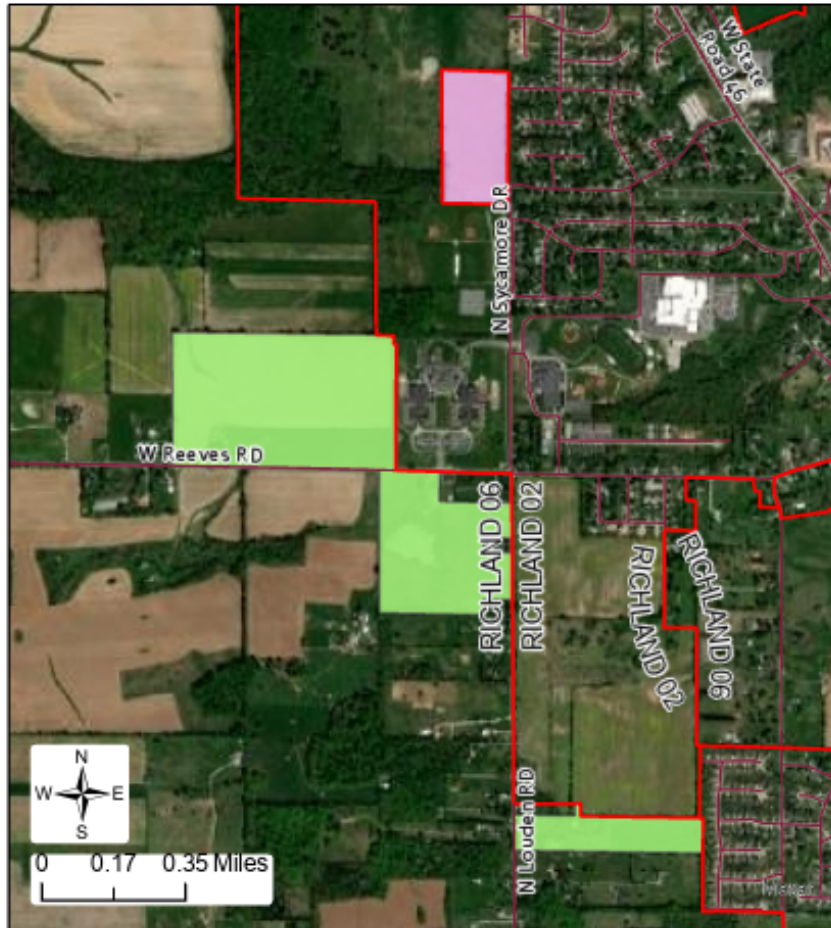
Review Packet Nov 1 2021

## **Contents**

Review of 7 Committee Approved Precinct Changes

Record of Noncontiguous Precincts

# Map #1 Monroe County



## Legend

- 2020 Voter Precincts
- Split Block Transfer
- Transferring Block
- Roads
- Railroads
- Townships

## New Richland 02 Blocks

181050013031019	181050013042016
181050013031030	181050013042013
181050013031007	181050013042002
181050013041009	181050013042004
181050013042009	181050013042005
181050013031023	181050013042001
181050013042000	181050013042017
181050013042008	181050013042003
181050013031022	181050013031020
181050013042010	181050013041013
181050013031028	181050013042011
181050013042015	181050013041002
181050013042012	181050013031021
181050013031029	181050013042007
181050013031032	181050013041014
181050013041000	181050013031008
181050013031005	
181050013041012	Added
181050013042014	181050013041007
181050013041005	181050013041006 split
181050013041008	181050013041011 split
181050013031004	181050013041020 split
181050013041017	
181050013041015	
181050013031009	

## New Richland 06 Blocks

181050013041016	181050013043027
181050013011004	181050013043023
181050013041020 split	181050013011008
181050013011013	181050013013002
181050013011011	181050013011012
181050013011003	181050013011010
181050013041010	181050013011016
181050013041006 split	181050013011018
181050013041011 split	181050013011019
181050013011001	181050013011014
181050013011015	181050013011017
181050013043040	181050013011002
181050013043030	181050013011005
181050013043041	181050013011006
181050013041004	181050013011007
181050013011000	181050013043042
181050013011009	181050013043043
	181050013013010

# Map #2 Monroe County



### Legend

- Split Block Transfer
- Major Roads
- 2020 Voter Precincts
- Roads
- Railroads

### New Richland 08 Blocks

181050013032034	181050013032013
181050013032037	181050013031033
181050013031012	181050013032016
181050013032038	181050013032019
181050013032020	181050013032005
181050013033005	181050013032018
181050013032007	181050013032021
181050013032044	181050013032004
181050013032042	181050013032027
181050013032001	181050013032009
181050013031031	181050013032010
181050013032002	181050013032049
181050013032043	181050013033021
181050013033015	181050013032022
181050013031026	181050013032025
181050013032012	181050013033020
181050013032015	181050013033016
181050013032011	181050013032006
181050013032014	181050013032050

Added

181050013032036 split

181050013032033
181050013032024
181050013033019
181050013032023

### New Richland 05 Blocks

181050013032046	181050013031000
181050013031014	181050013031016
181050013031018	181050013031010
181050013031003	181050013031013
181050013032036 split	181050013031011
181050013032032	181050013032041
181050013031006	181050013032048
181050013032045	181050013031024
181050013032029	181050013032026
181050013032039	181050013041001
181050013031027	181050013032017
181050013031015	181050013032028
181050013032000	181050013032035
181050013032040	181050013032030
181050013032003	181050013031017
181050013032047	181050013031025
181050013032031	181050013032008
181050013041003	181050013031001

Created by MoCo GIS Division, Oct 2021

# Map #3 Monroe County



## Legend

- 2020 Voter Precincts
- Transferring Block
- City of Bloomington Boundary
- Major Roads
- Roads
- ++ Railroads

## New Perry 23 Blocks

181050010023013
181050010023011
181050010023012
181050010023017
181050010023020
181050010023015
181050015011008
181050015011010
181050010023016
181050015011009
181050015011005
181050015011001
181050010023018

181050015011002
181050015011006
181050015011007
181050011031000
181050011031017
181050010023014
181050010023007
181050015011004
181050015011000
181050015011003
181050010023010
181050010023019

Added  
181050010023022

## Added In Other Change

181050010021007
181050011021008
181050011021007

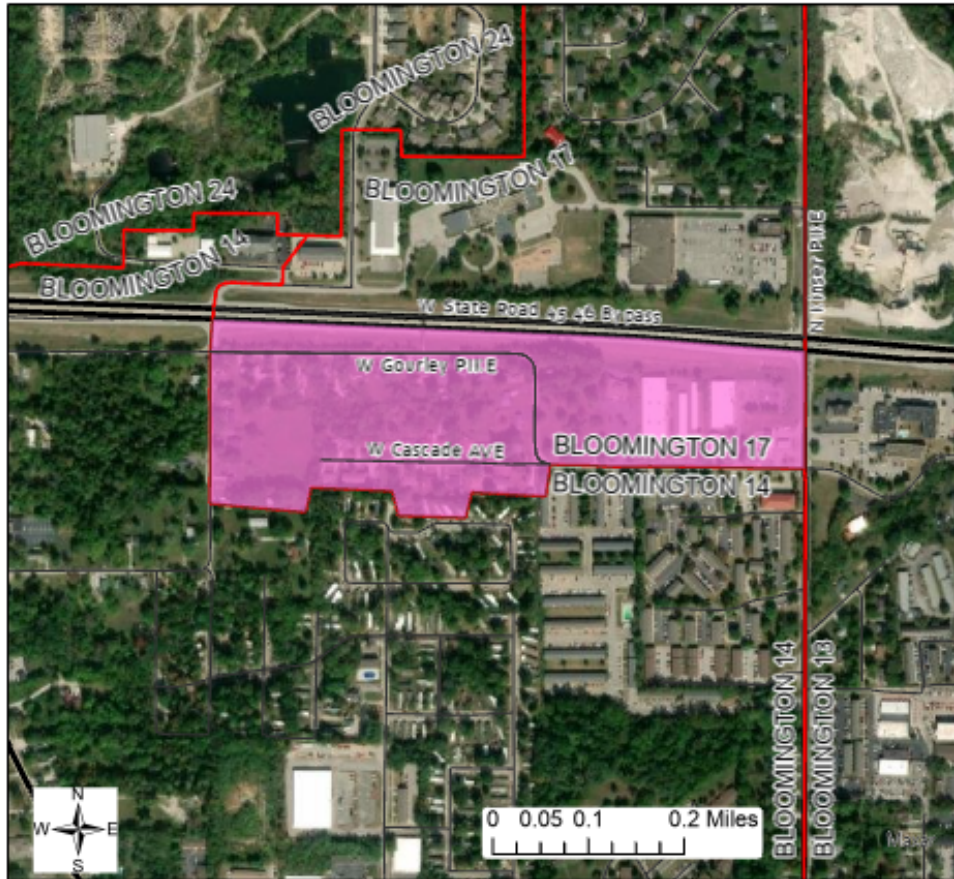
## New Perry 11 Blocks

181050010022003
181050010022005
181050010022012
181050010022011
181050010023023
181050010022013

181050010022000
181050010022008
181050010022001
181050010022002
181050010022009
181050010022010
181050010022006
181050010022007
181050010022004

Created by MoCo GIS Division, Oct 2021

# Map #4 Monroe County



## Legend

- Transferring Blocks
- Roads
- 2020 Voter Precincts
- Railroads
- Major Roads

## New Bloomington 14 Blocks

181050008012035	181050013012015
181050007003040	181050006022019
181050006022010	181050006013025
181050006022006	181050006022000
181050006021004	181050006022007
181050006021021	181050006022005
181050006021019	181050007003041
181050006021013	181050006021002
181050006021016	181050006022008
181050006021012	181050006021015
181050006021014	181050006022018
181050006021022	181050006021011
181050006021017	181050008012040
181050006021003	181050006022016
181050006021010	181050006021018
181050006013026	181050006022001
181050008012041	181050006013027
181050008012044	181050006022003
181050006022002	181050006022009
181050008012045	181050006021020
181050006022004	181050007003043
181050007003042	
181050008012042	
Added	
	181050006021005
	181050006021006

## New Bloomington 17 Blocks

181050008012008	181050008012049
181050008012032	181050008012033
181050008012019	181050008012028
181050008012048	181050008012031
181050008012034	181050008012050
181050008012026	181050008012010
181050006021001	181050008012009
181050008012030	181050008012036
181050008012004	181050008012027
181050008012018	
181050008012029	

Created by MoCo GIS Division, Oct 2021

# Map #5 Monroe County



## Legend

- 2020 Voter Precincts
- Roads
- Transferring Block
- Railroads
- Major Roads

## New Bloomington 9 Blocks

181050009032002	181050009032001
181050009032006	181050009032005
181050008021013	181050009031005
181050009032003	181050009031003
181050009031002	181050009031004
181050009032000	181050009032009
181050009032008	181050009032007
181050009031006	
181050009032004	

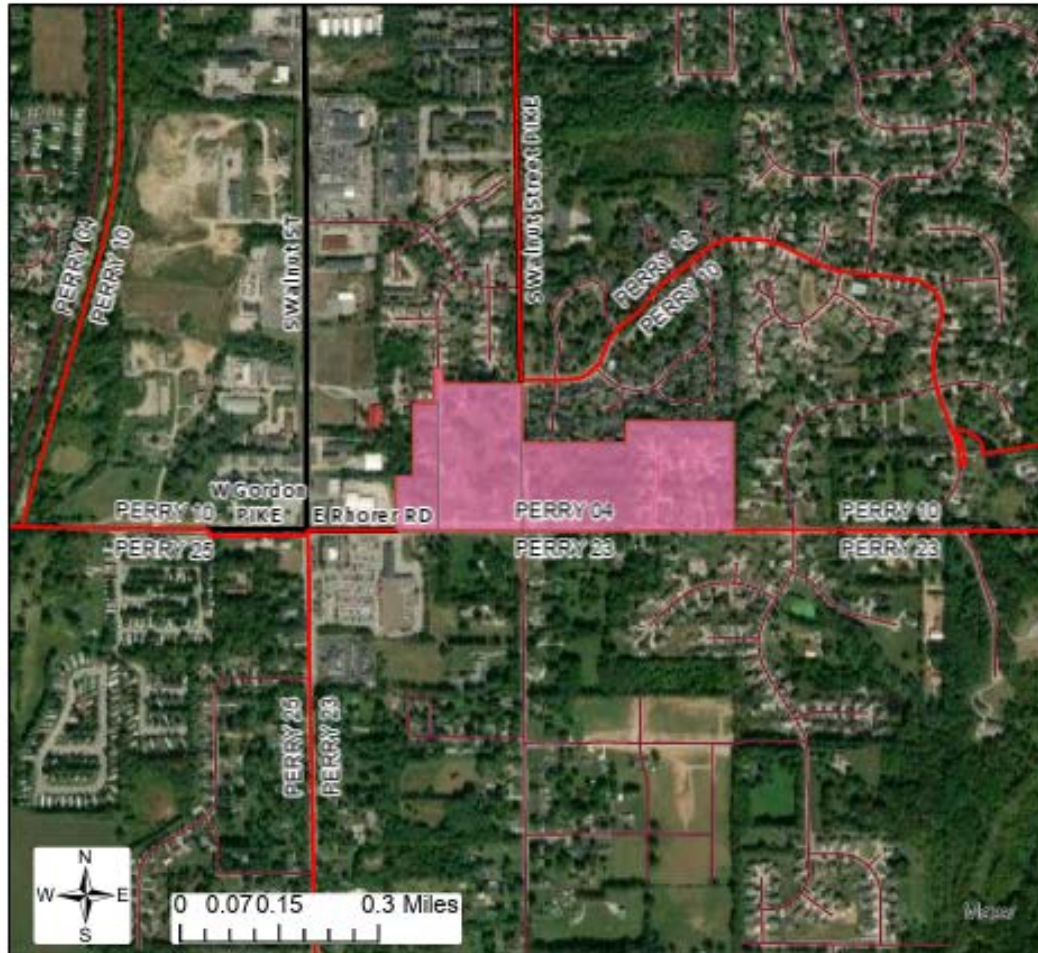
Added  
181050009032010

## New Bloomington 8 Blocks

181050009012014	181050009012008
181050009012012	181050009012000
181050009012020	181050009012015
181050009012010	181050009012009
181050009012006	181050009012013
181050009012019	181050009012003
181050009012021	181050009012011
181050009012005	181050009012007
181050009012017	181050009012016
181050009012002	181050009012004
181050009012001	181050002012008
181050009012018	

Created by ~~MoCo~~ GIS Division, Oct 2021

# Map #6 Monroe County



### Legend

- 2020 Voter Precincts
- Roads
- Transferring Blocks
- Railroads
- Major Roads

### New Perry 23 Blocks

181050010023013
181050010023011
181050010023012
181050010023017
181050010023020
181050010023015
181050015011008
181050015011010
181050010023016
181050015011009
181050015011005
181050015011001
181050010023018

181050015011002
181050015011006
181050015011007
181050011031000
181050011031017
181050010023014
181050010023007
181050015011004
181050015011000
181050015011003
181050010023010
181050010023019

### Added

181050010021007
181050011021008
181050011021007

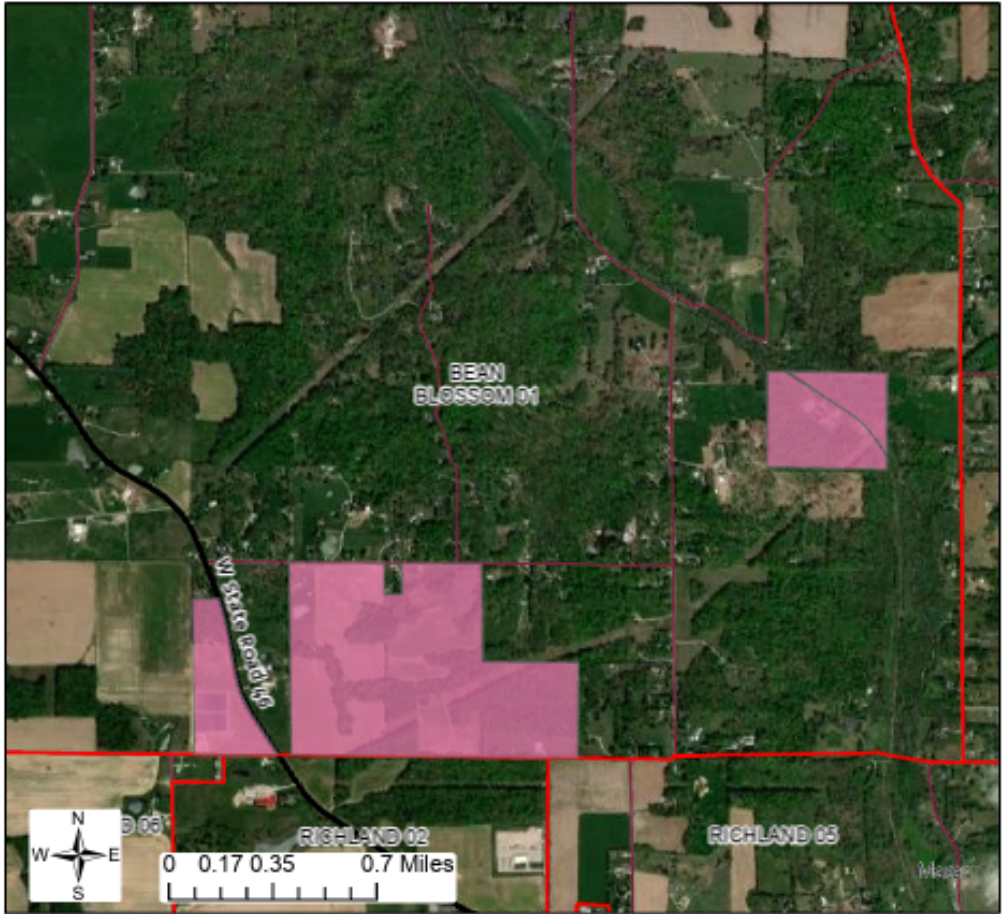
Added In Other Change  
181050010023022

### New Perry 04 Blocks

181050011022005
181050011022004
181050011022006
181050011023008
181050011032011
181050005022011
181050011023004
181050011023007
181050011032014
181050011022000
181050011023018
181050011023017
181050011023016
181050011022002

181050011022001
181050011023005
181050011022009
181050011032006
181050005022012
181050011032009
181050011032008
181050011023025
181050011032005
181050004021014
181050004021011
181050011022007
181050011022008

# Map #7 Monroe County



- Legend**
- New Bean Blossom 03
  - 2020 Voter Precincts
  - Major Roads
  - Roads selection
  - Roads
  - Railroads

**New Bean Blossom 03 Blocks**

Added

181050013015050	181050013015056
181050013015047	181050013015044

**New Bean Blossom 01 Blocks**

181050013015035	181050013015049
181050013015053	181050013015031
181050013015046	181050013015025
181050013015019	181050013015033
181050013015041	181050013015016
181050013015030	181050013015042
181050013015058	181050013015045
181050013015012	181050013015001
181050013015004	181050013015006
181050013015011	181050013015002
181050013015032	181050013015008
181050013015013	181050013015015
181050013015007	181050013015027
181050013015039	181050013015028
181050013015048	181050013015026
181050013015014	181050013015038
181050013015023	181050013015034
181050013015057	181050013015024
181050013015054	181050013015051
181050013015020	181050013015052
181050013015010	181050013015037
181050013015009	181050013015036
181050013015029	181050013015055
181050013015017	181050013015021
	181050013015018
	181050013015003
	181050013015005
	181050013015022
	181050013015000
	181050013015040
	181050013015043

Created by **MoCo** GIS Division, Oct 2021



## Review of Noncontiguous Precincts

Bloomington 06	Wraps around the unincorporated space of B24.
Bloomington 17	B17 is an area within the City that wraps around B24 which is not within the City. B24 cannot expand because it shares a boundary with the State House Boundary.
Perry 02	P2 consists of 2 pieces of the Perry Township that are unincorporated islands.
Perry 04	The associated unincorporated island is adjacent to Perry 23 but was kept as an island due to the State House boundary. That boundary changed, so that island was approved by the committee to join Perry 23.
Perry 10	This wraps around that unincorporated space of Perry 04.
Richland 01	All islands related to municipal boundaries.
Richland 05	All islands related to municipal boundaries.
Richland 06	All islands related to municipal boundaries.
Richland 08	All islands related to municipal boundaries.
Richland 09	All islands related to municipal boundaries.
Van Buren 01	Portion of VB wrapping around VB 02
Van Buren 02	All the incorporated space of VB.